

**Legend:**

- pendant light fitting, low energy
- fluorescent light fitting suspended twin batten with diffuser
- ⊕ external light fitting with photocell and movement detection Aurora LED bulkhead AU-BH351 emergency light
- light switch approx 1100mm from floor level
- ↳ switched spur outlet
- ↳-2 twin 13 amp switched socket approx 400mm from floor level
- ↳-2/HL twin 13 amp switched socket approx 1100mm from floor level
- ▷ telecoms
- ⊕ smoke detector
- ⊕ heat detector
- electrical distribution board

**General plumbing**  
Water installation to comply fully with Scottish Water by-laws, and including all necessary inspections and approval.  
All to comply with BS 6700 (services supplying water), BS 5572 (sanitary pipework) and BS 6465 part 1 (sanitary appliances).  
All hot and cold heating pipes and hot water pipes to be insulated to comply with BS 5422:2001.  
Drainage system to be in accordance with BS EN 12056-1; 2000, BS EN 752-3 1997 (Amd 2), BS EN 752-4 1998 and BS EN 1610 1998  
Sanitary pipework to be in accordance with BS EN 12056-2; 2000  
Rainwater drainage to be in accordance with BS EN 12056-3; 2000

**Heating**  
Heating to be by storage convector heaters  
Heated towel rail in wc  
Hot water cylinder to be 75lit direct

**Ventilation**  
Extract fan to wc only for 15 l/s min capacity

**Electrical Installation**  
All to be in accordance with the current edition of the Regulations for Electrical Installations published by the Institution of Electrical Engineers and with BS 616, 1363 and 3861 and with IEC 435. Design, construction and installation to accord with BS 7671; 2008  
Distribution to be 3 compartment trunking at skirting level for data, telecoms and power. MK Prestige 3D skirting, or equal.  
Electrical fittings to be 350mm from internal corners, switches at 1050mm height, 400mm above FFL and 150mm above worktop

**Data**  
Include for 3 compartment trunking system

**Fire detection and alarm system**  
Alarm system designed to alert occupants of inner room if fire breaks out in building.  
Category L4 alarm system to BS5939; Part 1 :2002, complete with manual call points in accordance with BS 5839 Part 1 2002.

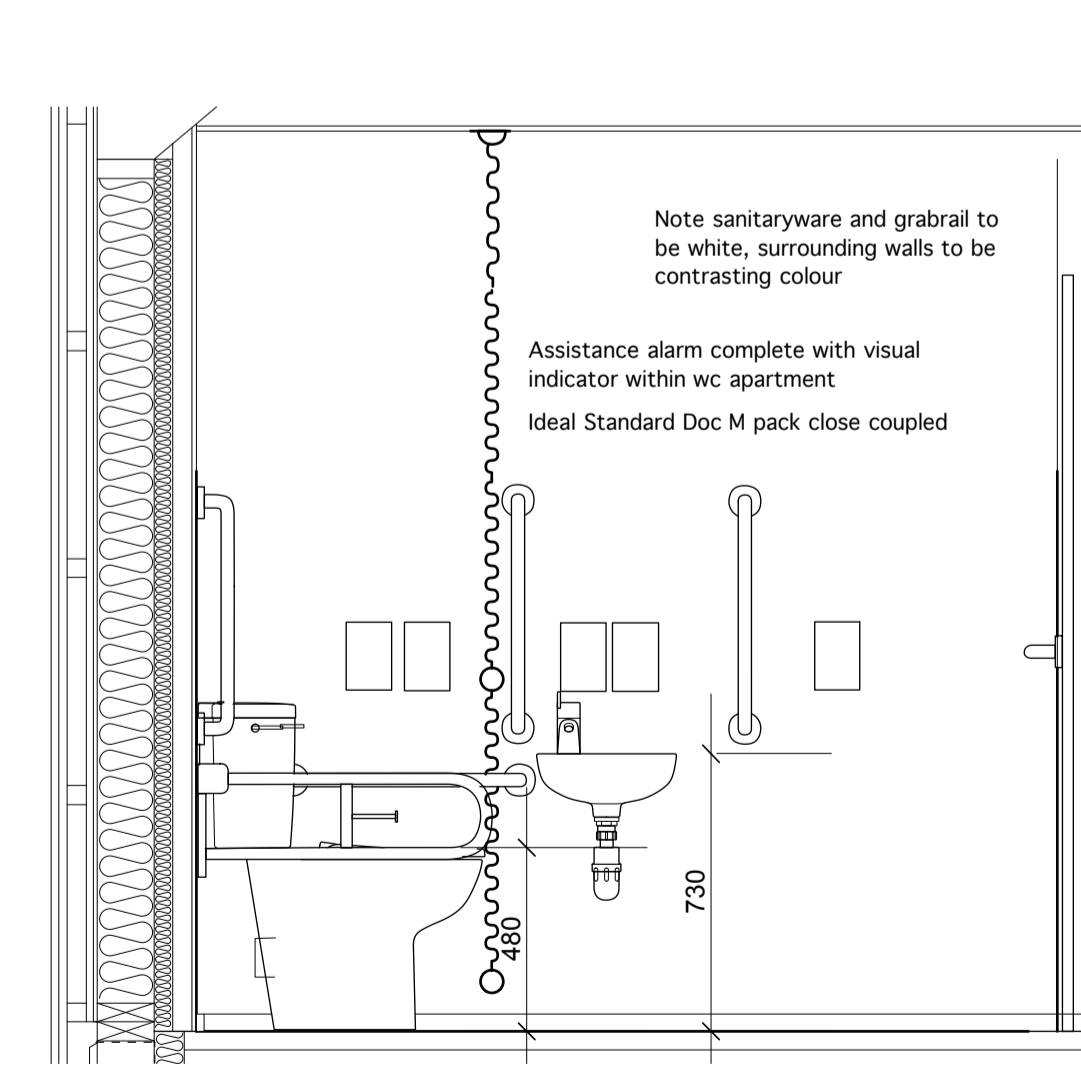
**Energy Performance Certificate**  
Certificate to be located in easily accessible position adjacent to meter

**Photovoltaic Panels**  
Installation to comprise 16 no. pv panels, 235W complete with inverter, isolator fixings and frames. System and installer to be accredited under Microgeneration Certification Scheme

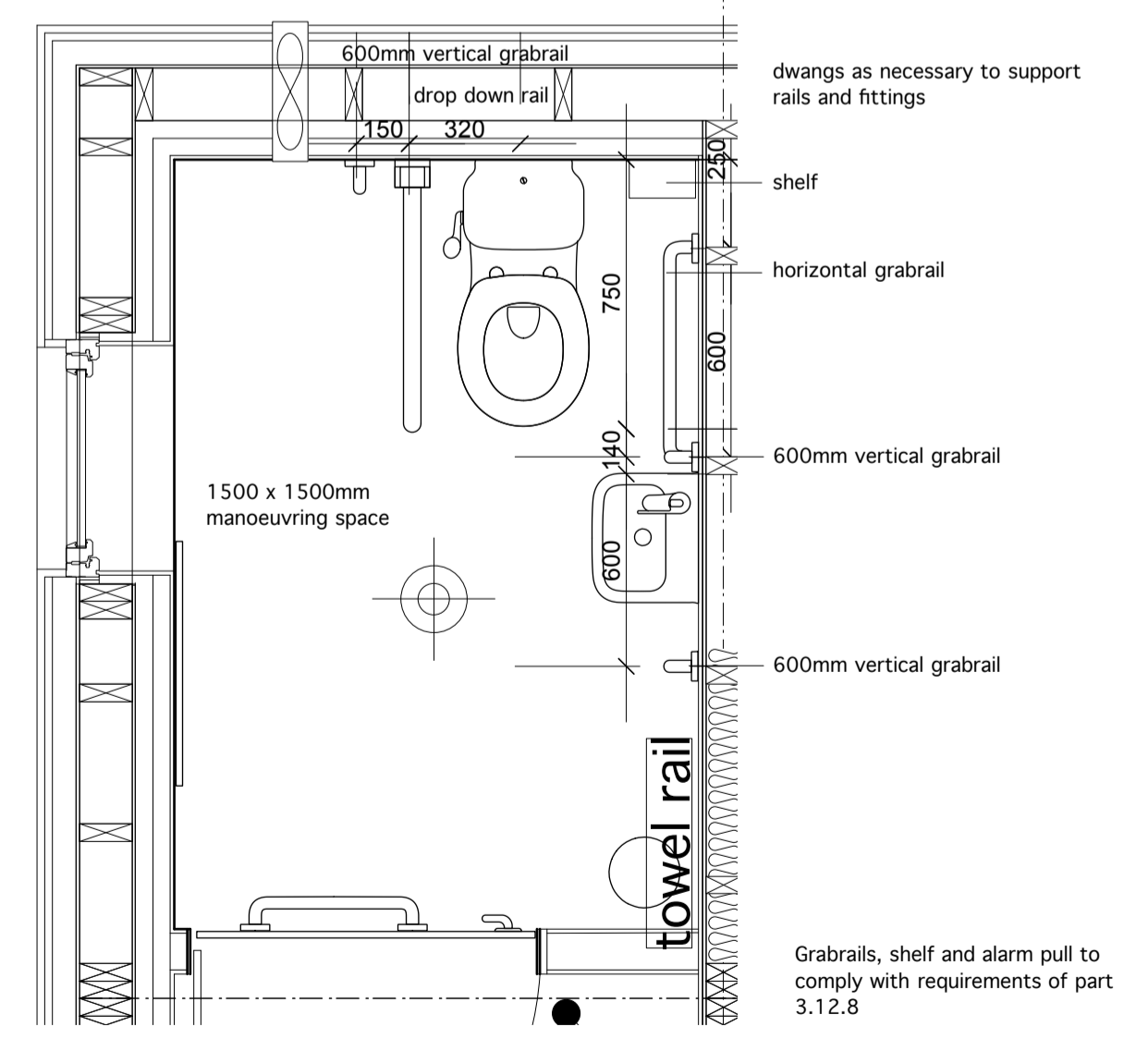
**Sustainability Label**  
Sustainability Label to be fixed to inside of building

**Drainage System Label**  
Each unit to have label fixed adjacent to electricity consumer unit, confirming maintenance required for treatment plant, and wording as follows "the drainage system from this property discharges to a wastewater treatment plant. The owner is legally responsible for routine maintenance and to ensure that the system complies with any discharge consents issued by SEPA and that it does not present a health hazard or nuisance"

**Air Tightness Testing**  
Allow for testing at least one unit in accordance with BS EN 13829:2001. Design air permeability 10 cu m / h / sq m, verifier to select unit



Accessible wc section 1:20



Accessible wc plan 1:20

To be read in conjunction with engineer's details

do not scale drawing, if in doubt seek clarification from architect

revisions & notes  
A Dec 13 door clear width 800mm, Cat L4 fire detection system, drainage system label, sanitaryware/rails visual contrast, visual indicator in wc, coir entrance matting, clear space in lobby, air tightness testing  
B Feb 14 W1 inward opening, rubber entrance matting

© Rural Design Ltd

The Green, Portree, Isle of Skye, IV51 9BT  
tel. 01441478 613379  
www.ruraldesign.co.uk studio@ruraldesign.net  
**RURAL DESIGN ARCHITECTS**

Client <b>North Harris Trust</b>	Project <b>Business Units, Tarbert</b>
Dwg No. 190/t101b	Status Tender
Drawing Title Plans	Scale 1:50
Date Nov 13	Drawn NT